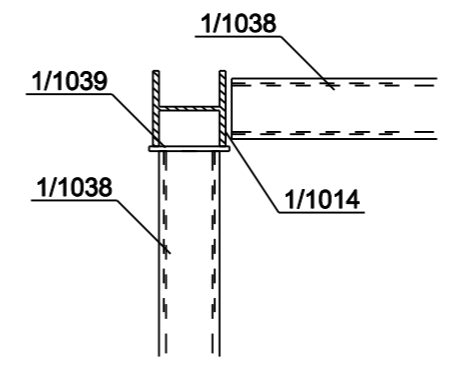
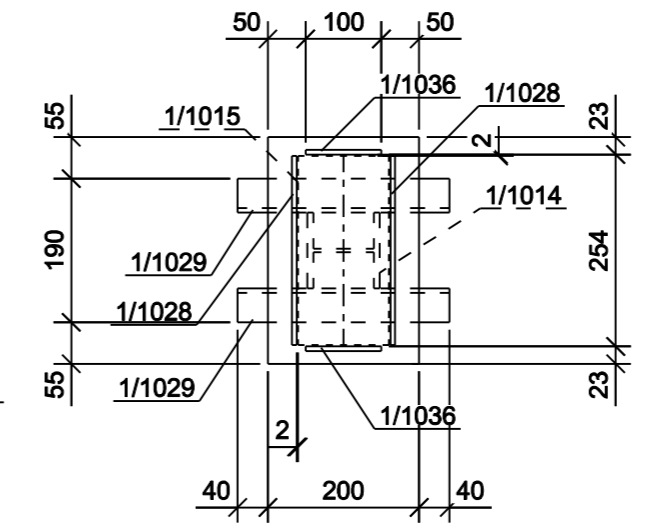


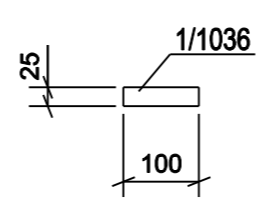
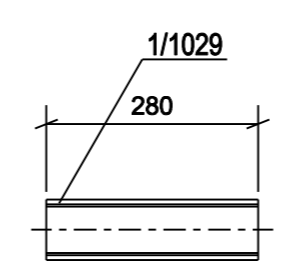
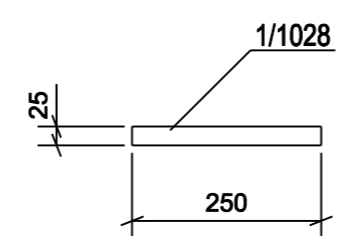
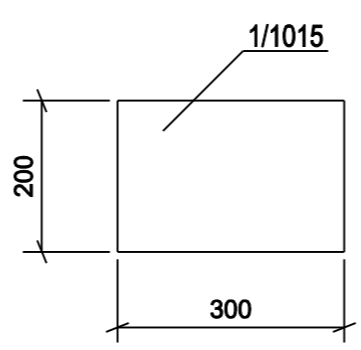
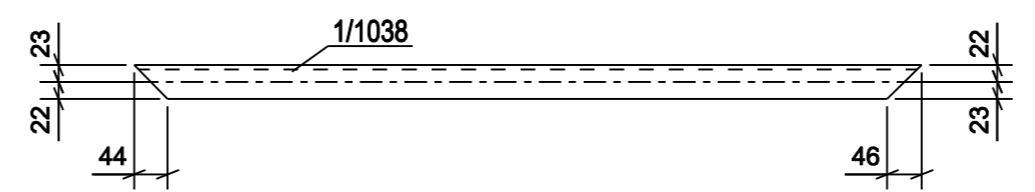
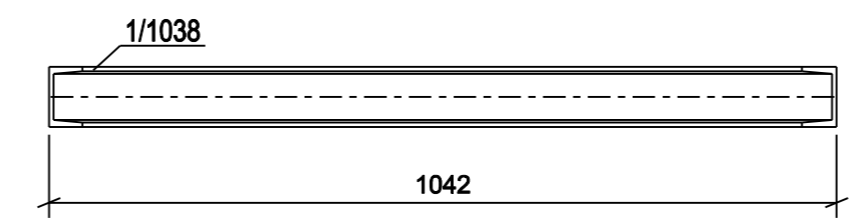
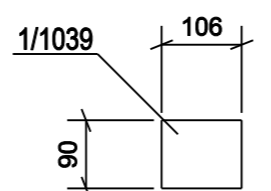
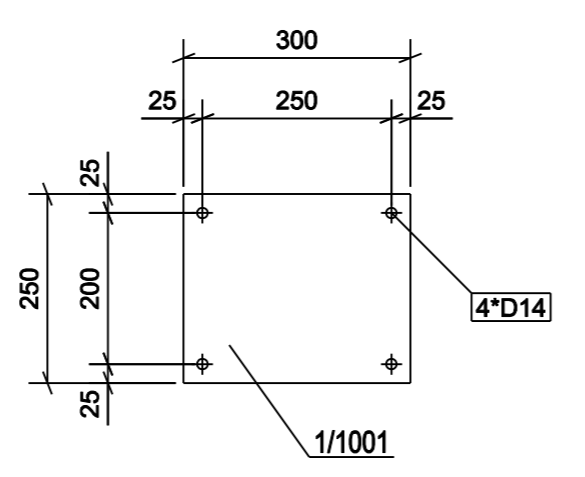
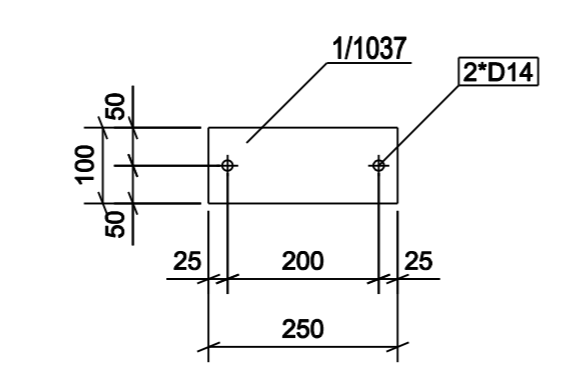
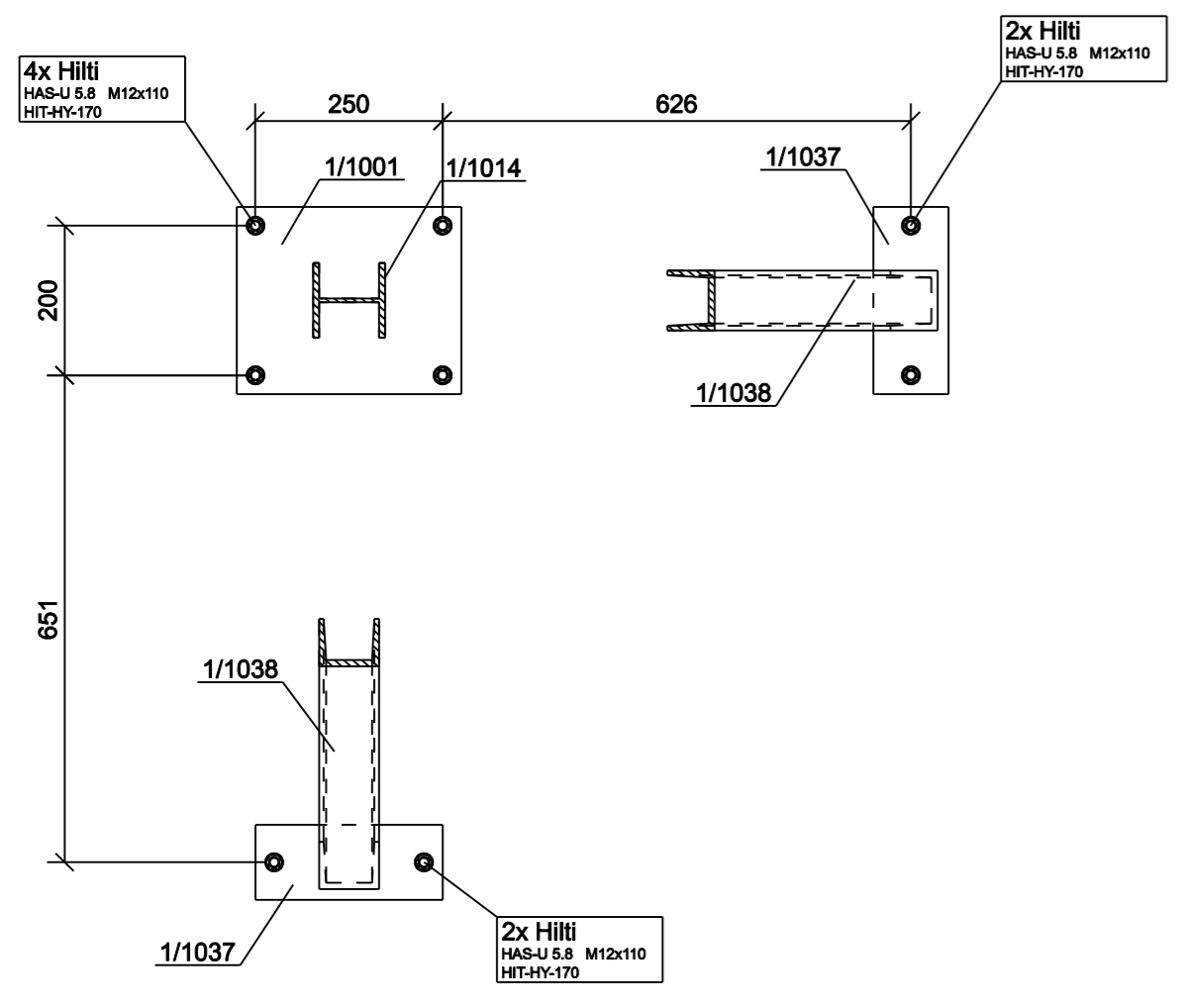
Przekrój B - B



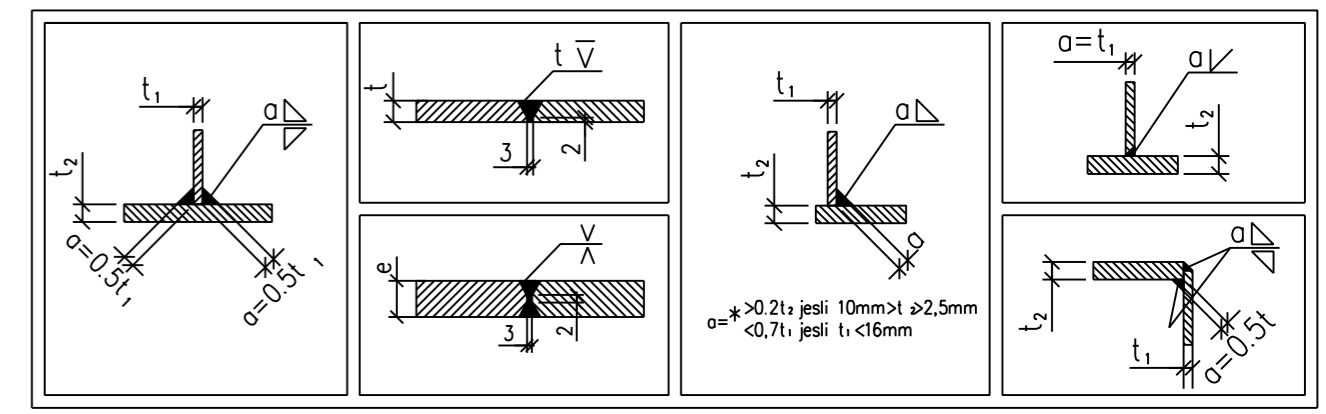
Przekrój D - D



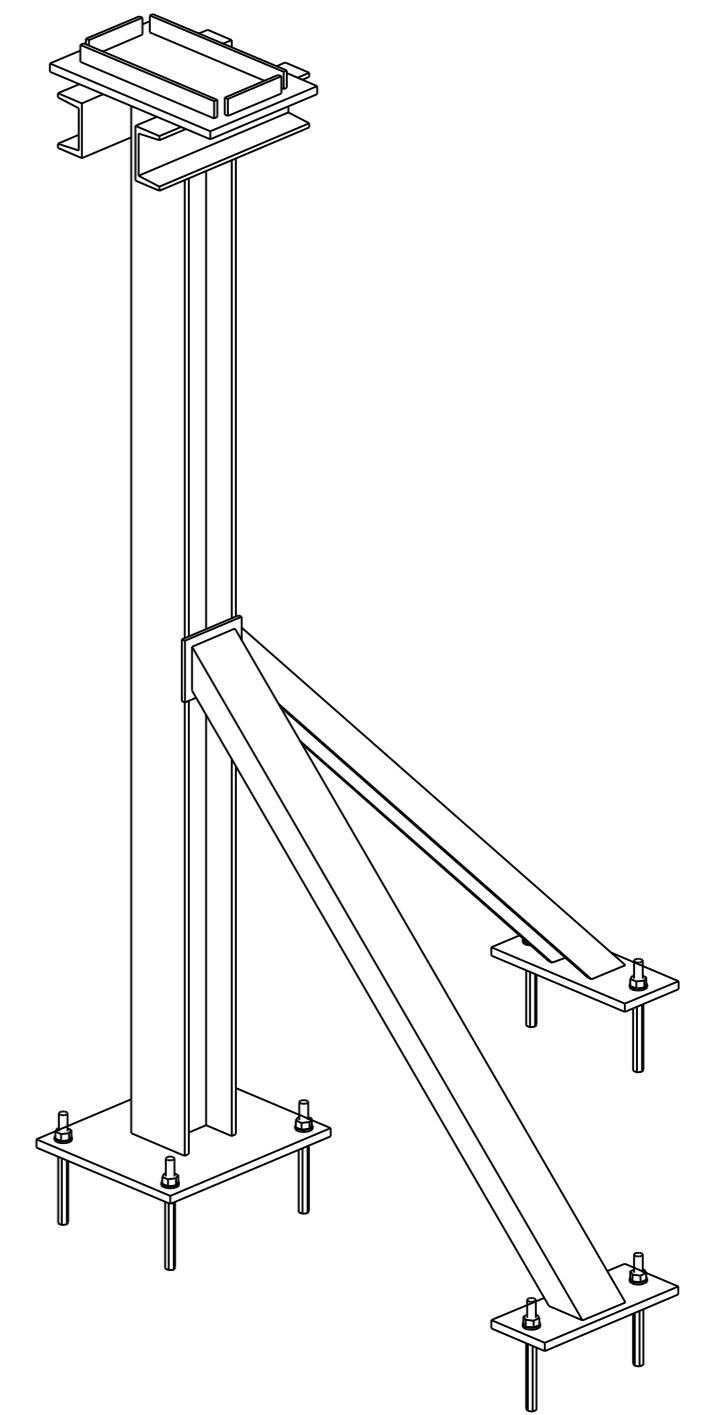
Przekrój C - C



Zestawienie dla 1 el. wysytkowego			1/4		Suma		1 X Wykonać	
Poz.	Sztuk	Profil	Długość	Masa 1 poz.	Masa całk.	Materiał	Uwagi	
1/1001	1	PL12*250	300	7.07	7.07	S235JR		
1/1014	1	HEA100	1534	25.58	25.58	S235JR		
1/1015	1	PL12*200	300	5.65	5.65	S235JR		
1/1028	2	PL6*25	250	0.29	0.59	S235JR		
1/1029	2	UPN80	280	2.42	4.84	S235JR		
1/1036	2	PL6*25	100	0.12	0.24	S235JR		
1/1037	2	PL12*100	250	2.36	4.71	S235JR		
1/1038	2	UPN80	1042	9.00	17.99	S235JR		
1/1039	1	PL6*90	106	0.45	0.45	S235JR		
Waga sumaryczna [kg]:					67.1			



Widok 3D



ZMIANY		Modernizacja układu pompowego w Ciepłowni Sierpc. Konstrukcja wsporcza 1/4				Inwestor: Ciepłownia Sierpc ul. Przemysłowa 2a 09-200 Sierpc	
Projektował	M. Ciepliński	07.2021	1:10	Nr rysunku:	B-0004	Nr projektu:	EP-04/21 T1
ElektroMontaż-Toruń		ul. Wał Ząbkowski 20 87-100 Toruń tel. 56 / 639 12 10 fax 56 / 639 12 11		Nr kolejny rysunku:		30	